



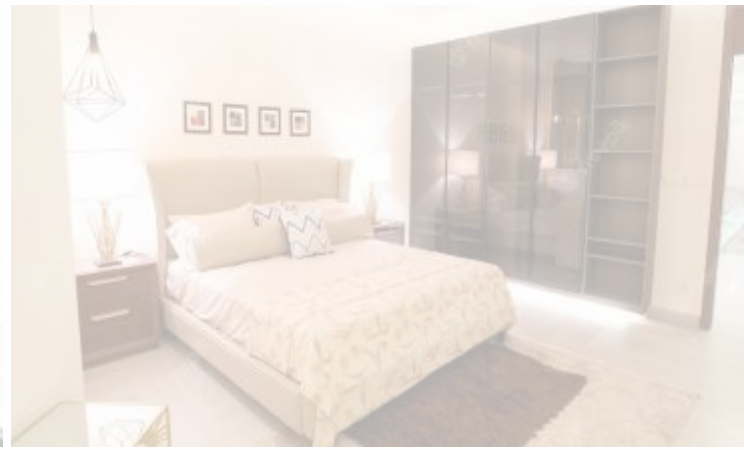
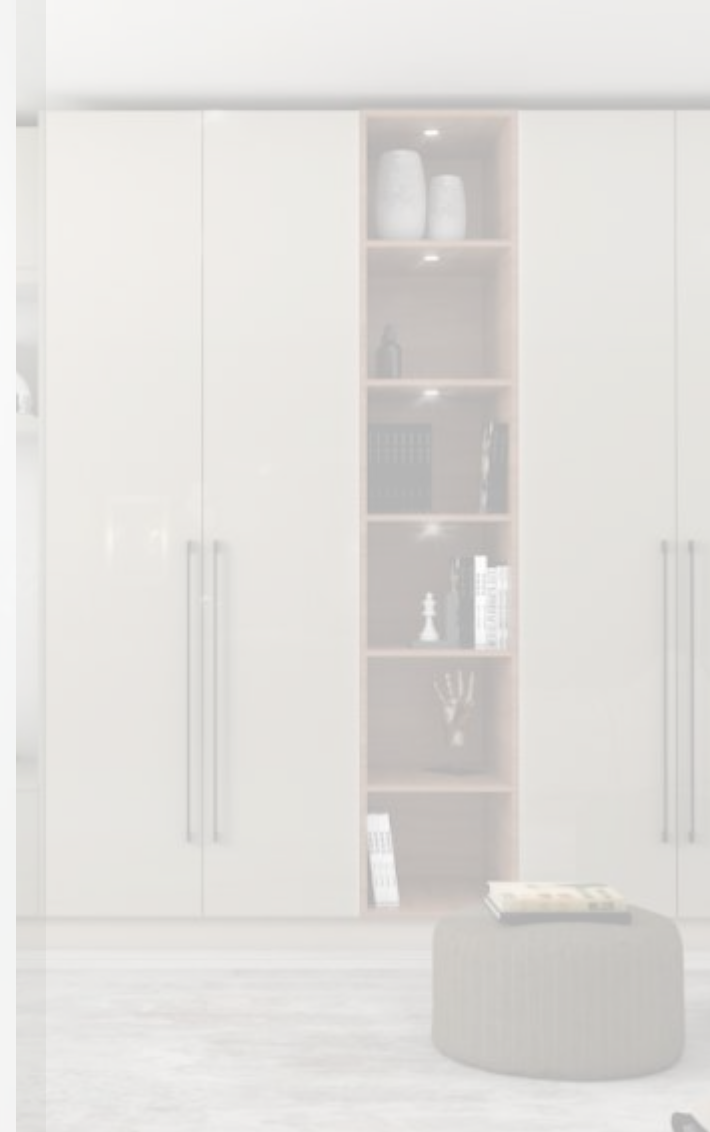
FURNERA

FURNITURE FOR NEW ERA

: WIDE RANGE OF :

DOMESTIC FURNITURE
MODULAR FURNITURE

[f](#) [i](#) [v](#) [i](#) [n](#) @furneraindia





Shree Ambika Steel Industries (Products marketed under brand name “Furnera”) is a family affair, now in its third generation, was founded, at Surat (Diamond City) in 1988 by Shri Harjivanbhai Dodiya. With sheer determination and an unwavering commitment to excellence, He started the business from humble beginnings, crafting each piece by hand and delivering them with pride.

Starting with fabrication work mainly doors and grills, Harjivanbhai along with his son Dilipbhai, soon began taking contracts of Surat Municipal Corporation. The father-son duo never looked back after that. Having their own workshop with area of 10,000 Sq. feet in Varachha area, they started making Office tables and slotted angle racks.

Over the years, the dedication to quality craftsmanship and exceptional customer service allowed them to grow and thrive, with the torch passed on to the capable hands of the third generation leader, Mr. Vijay Dodiya (Son of Dilipbhai) in 2015. He transformed the workshop into an industrial facility covering 30,000 Sq. feet in Kamrej. The family's perceptive insights led to the inclusion of more products like cupboards, heavy duty racks, etc. He embraced technological advancements and modern manufacturing processes, allowing them to expand the offerings and cater to a wider range of customer preferences while maintaining commitment to superior craftsmanship.

The ambition of an energetic Youngman Vijay, combined with wisdom of his father Dilipbhai added another milestone in the successful journey of Shree Ambika Steel Industries. In 2022, aftermath of Covid-19 could not decelerate the speed of growth but the factory area increased to 1 lakh Sq. feet in Palsana area and Product portfolio augmented to more than twenty five.

In a strategic move to diversify the product range and meet the evolving needs of our customers, they decided to venture into wooden modular furniture. Recognizing the timeless appeal and warmth of wood, they sought to combine the durability and craftsmanship that has been the cornerstone of their steel furniture business with the elegance and natural beauty of wooden modular furniture. 33 years of Dedication, Determination, and Deference defines the success of Shree Ambika Steel Industries.



VISION

To become a leading manufacturer of Steel and Wooden furniture in India with more than 500 dealers and turnover of INR 100 Crores by 2026



MISSION

Fulfilling furniture needs of the domestic, Institutional, Industrial sector by continual Product Innovation and Quality Assurance.



VALUES

- Ownership
- Creativity
- Commitment
- Continuous Learning
- Teamwork

WHY CHOOSE US?

- 100% In-house Production
- 33 years of rich Experience
- Latest Technology Machinery
- Well trained, Artistic Manpower
- Wide range of Products under one roof.
- Best Quality Products with Innovative designs.

FE-1001

DOMESTIC
Regular Cupboard

H	W	D
78"	40"	20"



FE-1002

Domestic Full Hanger
Locker - 2 Drawer Cupboard

H	W	D
78"	40"	20"
78"	46"	20"



WAMON
DESIGN

FE-1003

Domestic Sangam
Locker Drawer Cupboard

H	W	D
78"	46"	20"



FE - 1004

H	W	D
78"	46"	20"

Domestic Sangam
Locker - 2 Drawer Cupboard



FE -1005

Domestic Sangam
Half Door Cupboard

H	W	D
78"	46"	20"



FE -1006

H	W	D
78"	46"	20"

Domestic Sangam
Ambika Cupboard



FE -1007

Domestic
3 Door Cupboard

H	W	D
78"	46"	20"

ATTRACTIVE



FE -1008

H	W	D
78"	60"	20"

Domestic 2 Piece
Foldable Cupboard



FE -1009

Italian Cupboard
3 DOOR

H	W	D
78"	46"	20"

STRONG



FE -1010

H	W	D
78"	46"	20"

Italian Cupboard
3 DOOR



FE -1011

Italian Cupboard
3 DOOR

H	W	D
78"	46"	20"



FE -1012

Italian Cupboard
3 DOOR

H	W	D
78"	46"	20"



FE -1013

Italian Cupboard
3 DOOR

H	W	D
78"	46"	20"

LONG
LASTING



FE -1014

CNC Laser Cutting
Design Model

H	W	D
78"	40"	21"



FE -1015

CNC Laser Cutting
Design Model

H	W	D
78"	58"	21"



FE -1016

CNC Laser Cutting
Design Model

H	W	D
78"	54"	21"



H	W	D
78"	47"	21"

FE -1017

CNC Laser Cutting
Design Model



FE -1018

CNC Laser Cutting
Design Model

H	W	D
78"	60"	21"



FE -1019

CNC Laser Cutting
Design Model

H	W	D
78"	78"	21"



H	W	D
78"	66"	21"

FE -1020

CNC Laser Cutting
Design Model



ITALIAN METAL BED

FE -1021



FE -1022



RANGE OF DESIGNS



Size

6 feet x 4 feet

6 feet x 5 feet

6 feet x 6 feet

Attractive LOOKS

FE -1024



FE -1023



Available Colours 

SHOE RACK



	H	W	D	
2 Drawer	30"	20"	5"	4 PAIRS
3 Drawer	41"	20"	5"	6 PAIRS
4 Drawer	55"	20"	5"	8 PAIRS

	H	W	D	
2 Drawer	30"	30"	5"	6 PAIRS
3 Drawer	41"	30"	5"	9 PAIRS
4 Drawer	55"	30"	5"	12 PAIRS





MODULAR

KITCHEN FURNITURE



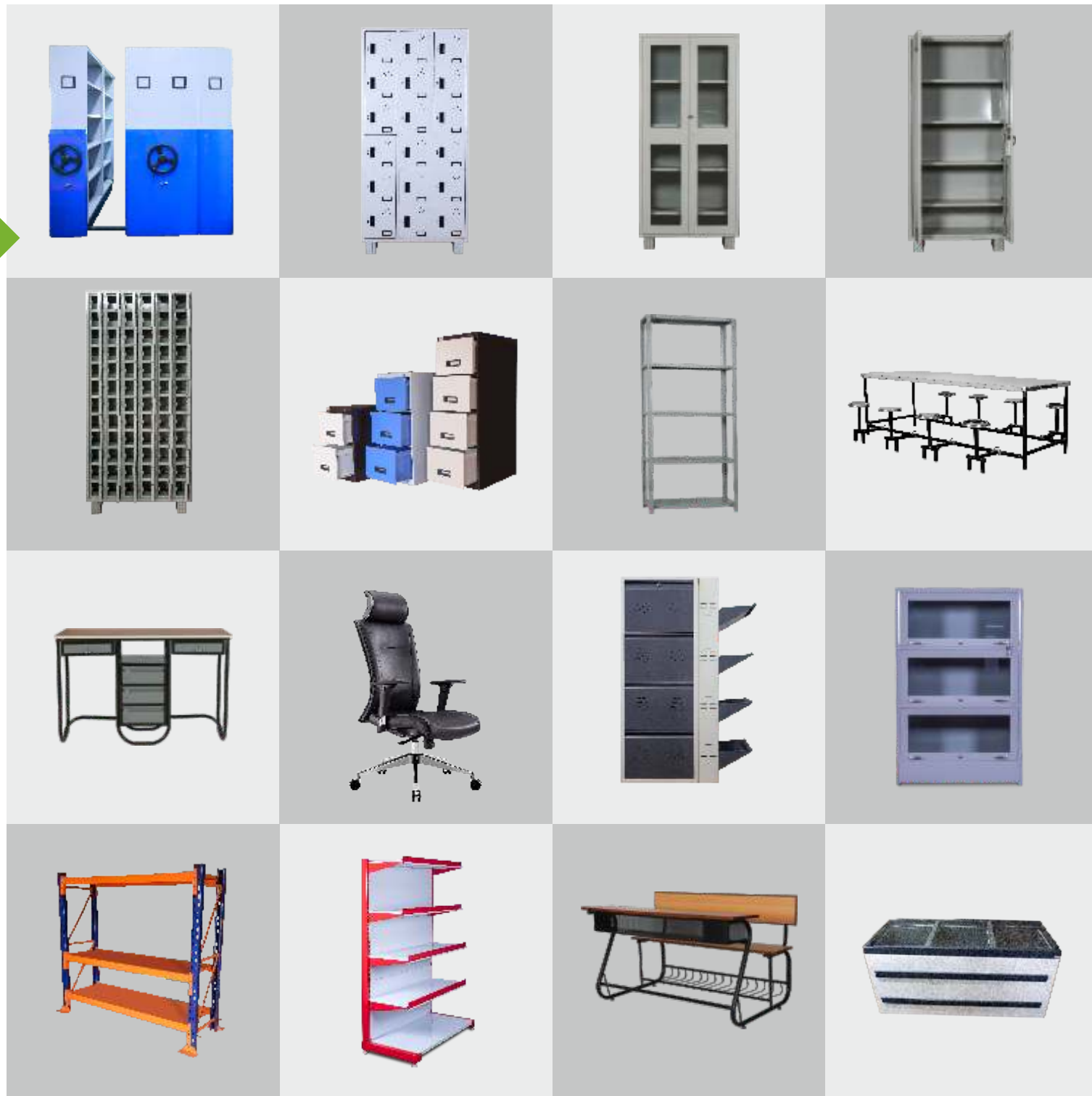
MODULAR
WARDROBE FURNITURE - WOODEN



WE ALSO MANUFACTURE :

INSTITUTIONAL - INDUSTRIAL
PRODUCTS

- Mobile Compactor
- Locker Cupboard
- Library Cupboard
- Store-well Cupboard
- Mobile Locker for Staff
- Filing Cabinet
- Slotted Angle Rack
- SS Canteen Table
- Office Table
- Office Chairs
- Shoe Rack
- Book Case
- Heavy Duty Rack
- Display Rack
- Benches
- Display Counter





OUR VALUABLE CLIENTS

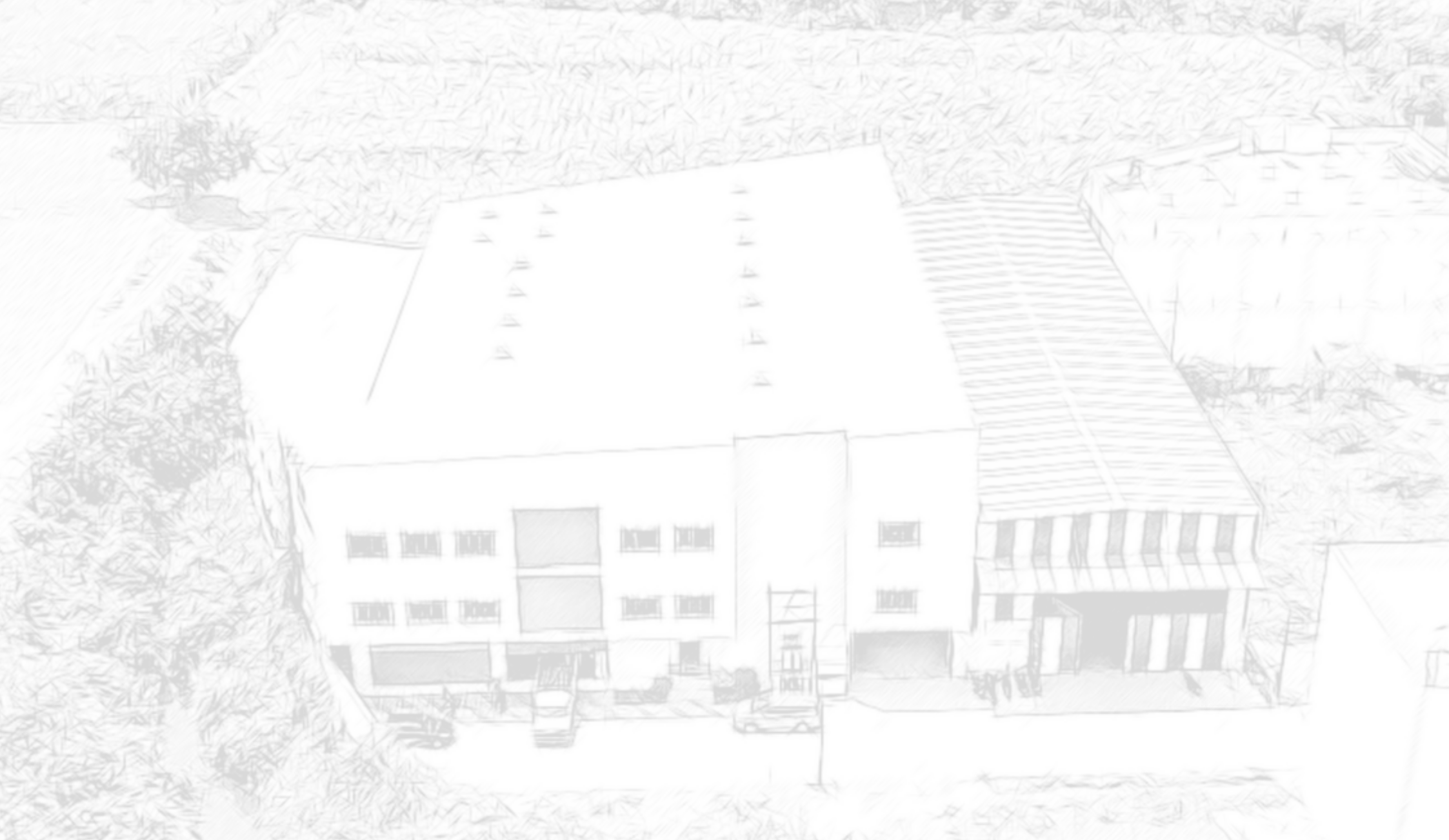


A decorative illustration of a branch with leaves and small flowers, rendered in a light green color, positioned behind the main text.

Thank You

for being our valued customer.

We are grateful for the pleasure of serving you.



 **326 to 333, Rajhans Texpa, Tati Jagda, Kadodara to Palsana,
N.H. No. 8, Baleshwar, Palsana, Surat - 394 317**

 **info@furnera.in**
 **www.furnera.in**

 **+91 97129 99589**
 **+91 72039 99589**